



WATER • TECHNOLOGY

Spare parts list

Revision number

Page
3Company name
Dept.
Editor
Phone number
Fax no.
E-mail

Customer

Supplier

Model - Revision @ Code_Document version

Attention: check the correspondence with the revision of your product

Pos.no

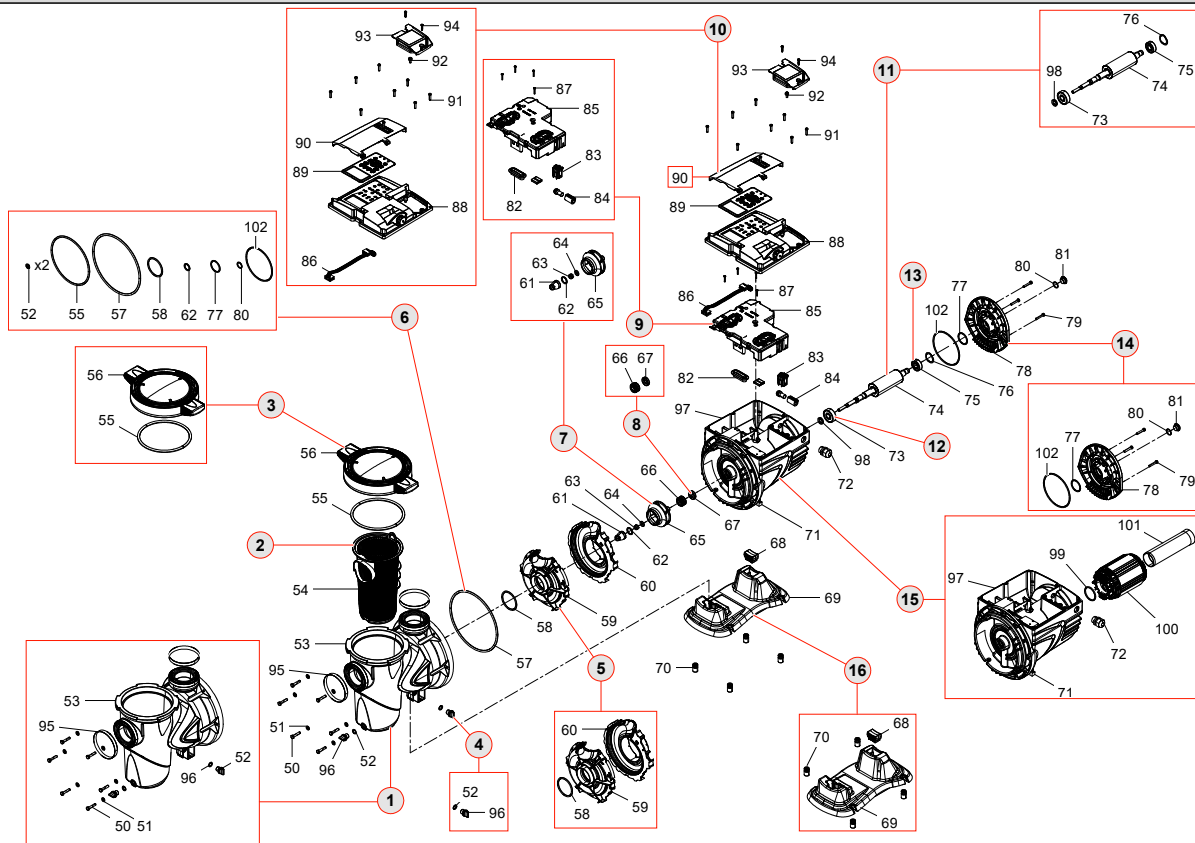
Description

Item no.

Qty.

UP / EUR

E.SWIM 150 M/220-240/GAS/FX/AUS1 - N.3. - - @ 60194428_a,c



1	SP - PUMP BODY	R00010334	2	Price on req.
2	(SP) FILTER	SP00005931	2	Price on req.
3	(SP) NUT RING	R00010358	2	Price on req.
4	SP - DISCHARGE CAP	R00010367	2	Price on req.
5	&(SP00006672)(SP) INTERNAL VOLUTE W/RING E-SWIM 150	SP00005930	2	Price on req.
6	(SP) KIT O-RINGS	SP00002539	2	Price on req.
7	(SP) IMPELLER Ø78	SP00002540	2	Price on req.
8	(SP) SHAFT SEAL D.15 E-SWIM	SP00007125	2	Price on req.
9	(SP) MAIN PCB E-SWIM	SP00002541	2	Price on req.
10	(SP) LOW VOLTAGE COMPLETE BOARD	SP00002542	2	Price on req.
11	(SP) POOL ROTOR W SHAFT H100	SP00002543	2	Price on req.
12	SP - BALL BEARINGS 6302-2RSH	R00010356	2	Price on req.
13	(SP) BALL BEARING 6202-2RSH	R00010751	2	Price on req.
14	(SP) MOTOR COVER	SP00002544	2	Price on req.
15	(SP) STATOR HOUSING + WOUND STATOR	SP00002545	2	Price on req.
16	SP - BASE	R00010366	2	Price on req.
90	(SP) E-SWIM USER PANEL COVER	SP00003548	2	Price on req.

Project

Creation software

Spaix® 5-2025.1 - 2025/03/26 (B

Issue date

2025-07-30

Last update

2025-07-30